



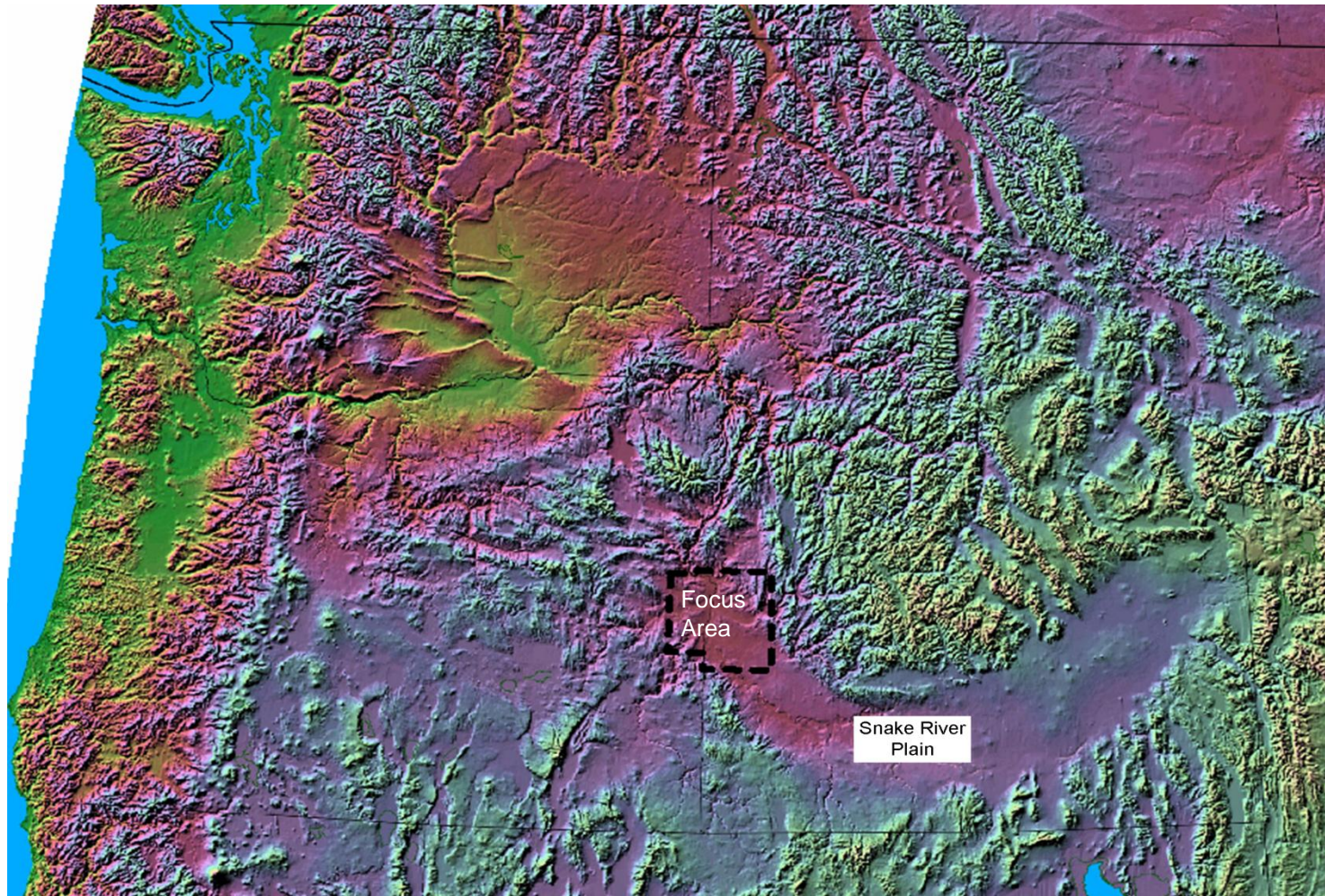
Milestones

- 2005 Formed as private company
- 2006 Acquired and listed on TSX-V
- 2007 Built North Sea oil and gas portfolio
- 2008 Commenced North Sea gas production
- 2009 US Onshore low cost diversification
- 2010 Significant gas condensate discovery in Idaho
- 2011 Divested Bridge North Sea Ltd., retained NPI

Growth Strategy

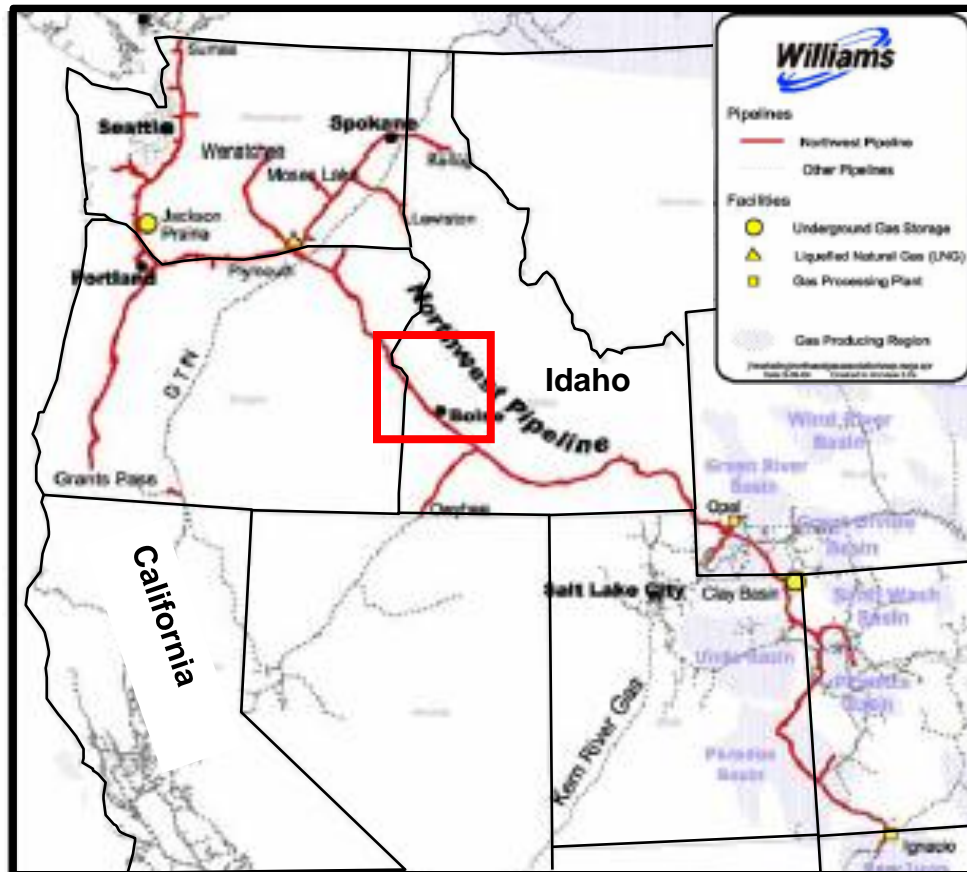
- Primary focus US Onshore
- Secondary focus UK North Sea
- Fast-track Idaho gas and condensate production to achieve near-term US cash flow
- Net profits income from UK Gas Area Durango Field to pay down debt

Pacific Northwest Physiography



Idaho Gas Demand

Williams Northwest Pipeline System



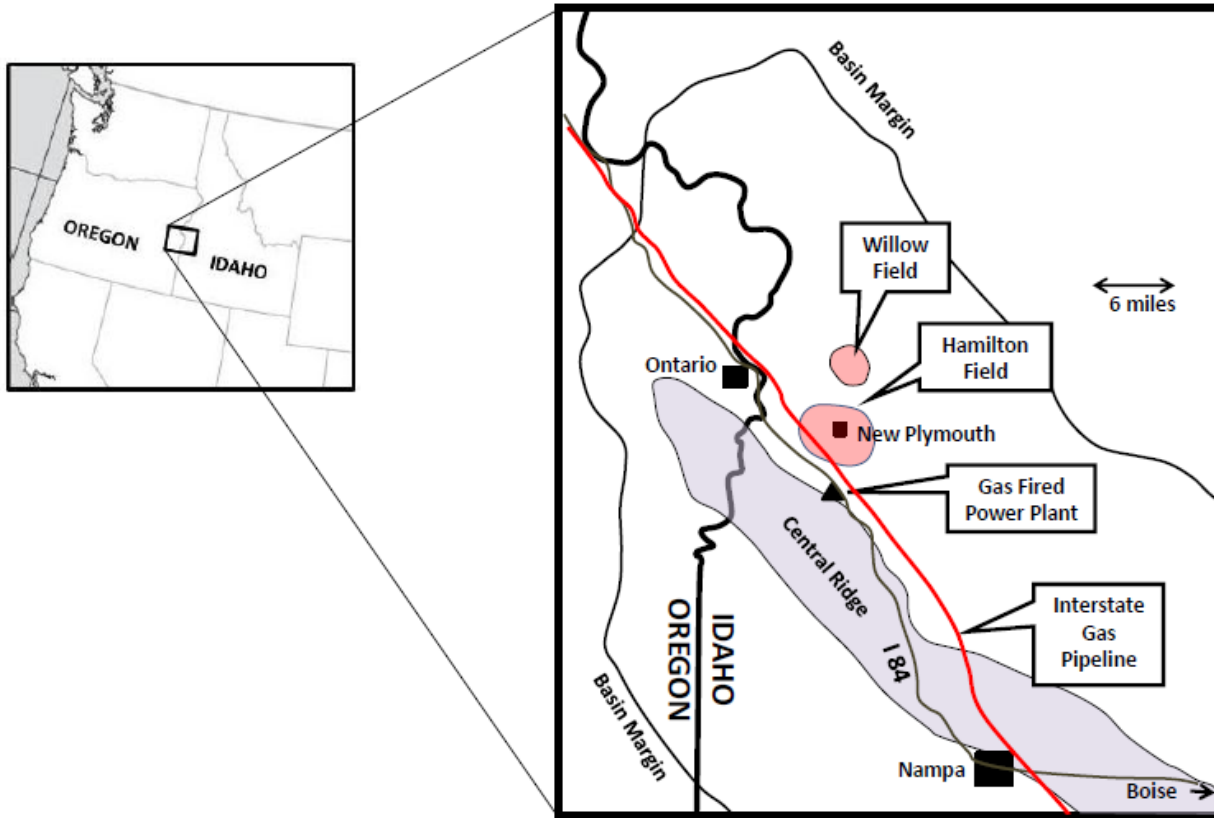
- InterMountain Gas residential/commercial gas demand 35 BCF/year

- Idaho Power electrical generation demand <50 MMCF/day from July 2012

- Williams Northwest Pipeline to West Coast has 1.3 BCF/day capacity available

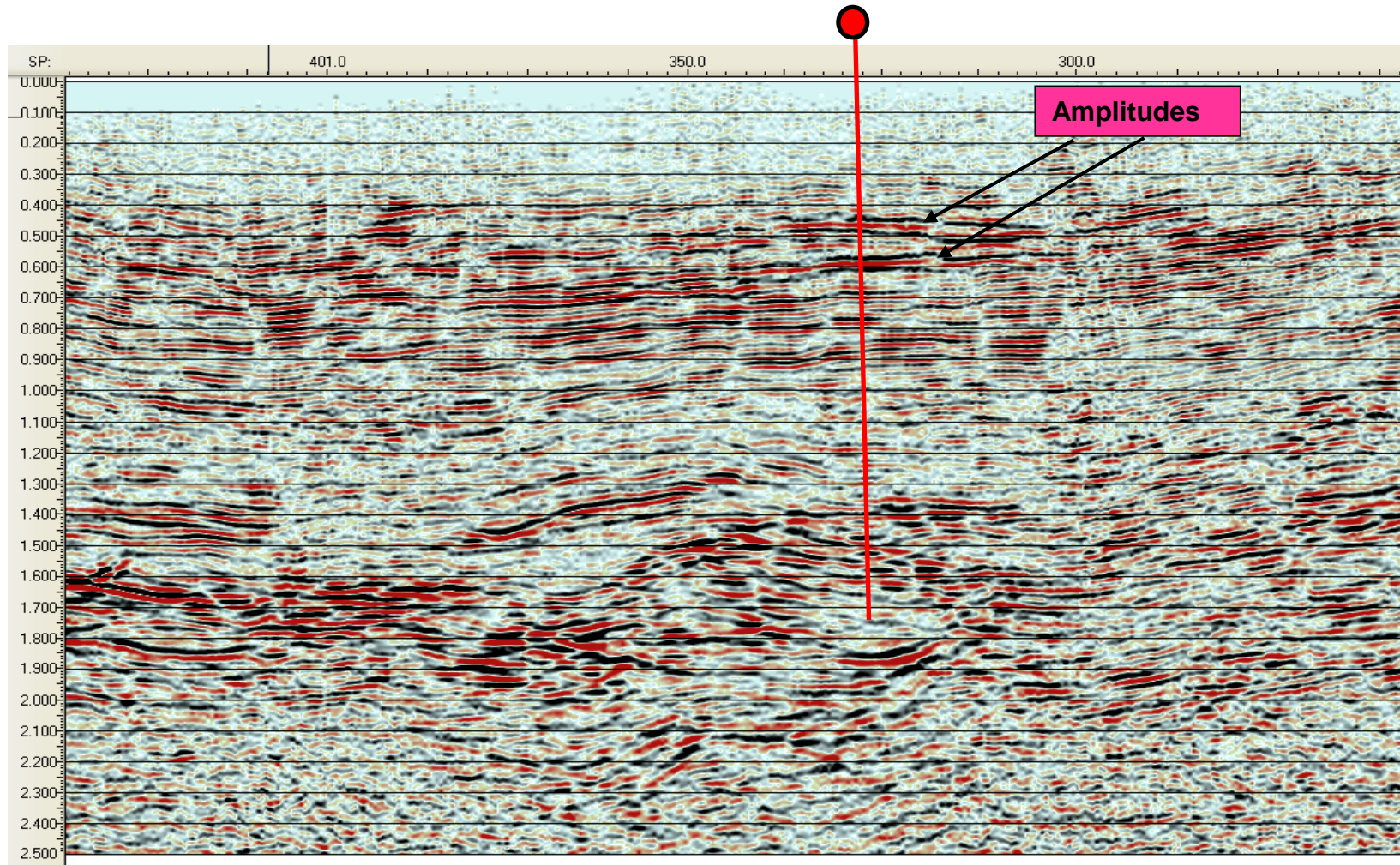
Western Idaho Development Areas

Western Idaho Basin



Willow Project Reprocessed Seismic

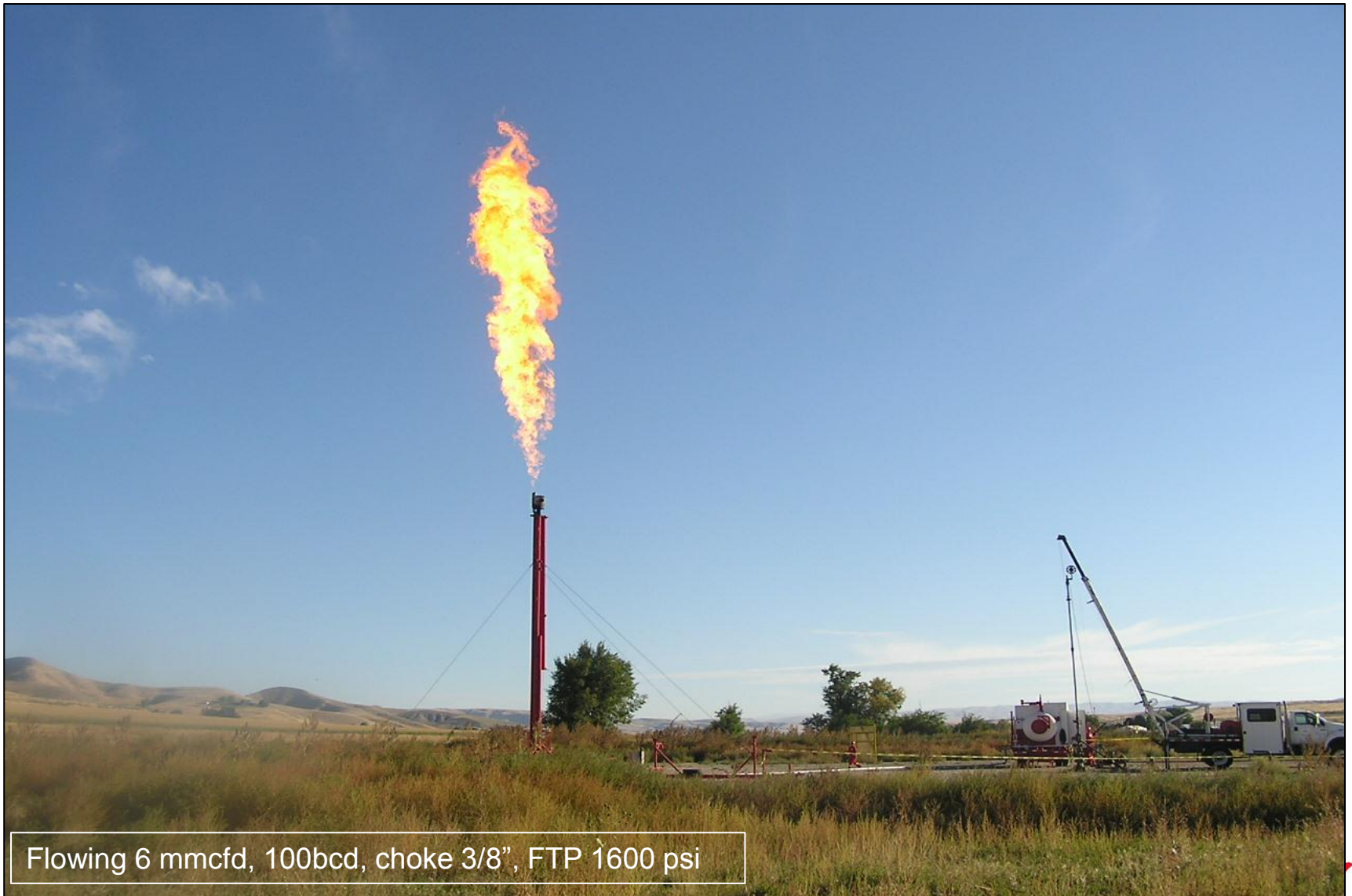
ML Investments1-10



Hamilton Development Drilling



ML Investments 1-10 flow testing



Flowing 6 mmcfd, 100bcd, choke 3/8", FTP 1600 psi

Wellhead protection



2011 Goals

- Close Bridge North Sea Ltd. sale
- Consolidate leasehold position in Idaho
- Commence Idaho production
- Idaho gas marketing agreement
- Reduce/retire debt

Forward Looking Statements

Certain statements contained in this presentation may constitute forward-looking statements. The forward-looking statements or information contained in this presentation are made as of the date hereof and the Company undertakes no obligation to update or revise any forward-looking statements, whether as a result of new information, future events or otherwise, unless required by applicable securities laws.

Certain of the forward-looking statements regarding the Company's financial outlook, anticipated revenue, future expenditures and cash flow forecasts may constitute future-orientated financial information ("FOFI"). Management of the Company approved the inclusion of the FOFI in the presentation based on the assumptions listed above on February 10, 2009. The FOFI included in this presentation has been provided only for the periods listed and for the sole purpose of providing an estimated guideline for the Company's possible future financial position and the FOFI may not be appropriate for other purposes.

These statements relate to future events or Bridge Resources Corp.'s (the "Company") future performance. All statements other than statements of historical fact may be forward-looking statements. Forward-looking statements are often, but not always, identified by the use of words such as "seek", "anticipate", "plan", "continue", "estimate", "expect", "may", "will", "project", "predict", "potential", "targeting", "intend", "could", "might", "should", "believe" and similar expressions. These statements involve known and unknown risks, uncertainties and other factors that may cause actual results or events to differ materially from those anticipated in such forward-looking statements. The Company believes that the expectations reflected in those forward-looking statements are reasonable but no assurance can be given that these expectations will prove to be correct and such forward-looking statements included in this presentation should not be unduly relied upon by investors. These statements speak only as of the date of this presentation and are expressly qualified, in their entirety, by this cautionary statement.

In particular, this presentation contains forward-looking statements, pertaining to the following: supply and demand for oil and natural gas; the quantity of reserves; the value of reserves; the flow rates of wells; capital expenditure programs; development of reserves; potential acquisitions; and expectations regarding the Company's ability to raise capital.

With respect to forward-looking statements contained in this presentation, the Company has made assumptions regarding, among other things: the legislative and regulatory environment; information regarding reserve potential; the Company's ability to obtain additional financing on satisfactory terms; ability to develop reserves and costs regarding such development; availability and costs of infrastructure.

The Company's actual results could differ materially from those anticipated in these forward-looking statements as a result of the risk factors set forth below and elsewhere in this presentation: volatility in the market prices for oil and natural gas; uncertainties associated with estimating reserves; geological, technical, drilling and processing problems; liabilities and risks, including environmental liabilities and risks, inherent in oil and natural gas operations; incorrect assessments of the value of acquisitions; incorrect estimates of costs; competition for, among other things, capital, acquisitions of reserves, undeveloped lands and skilled personnel; and weather conditions.

Resources: There is no certainty that any portion of the resources will be discovered. If discovered, there is no certainty that it will be commercially viable to produce any portion of the resources.

Barrel of Oil Equivalent: Where amounts are expressed on a barrel of oil equivalent ("boe") basis, natural gas volumes have been converted to boe at a ratio of 6,000 cubic feet of natural gas to one barrel of oil equivalent. This conversion ratio is based upon an energy equivalent conversion method and does not represent value equivalence at the wellhead. Boe figures may be misleading, particularly if used in isolation.